

ISSUE #1 | SPRING 2012

BROCK

FARMS

MAGAZINE

GARDEN WORLD



BRING IN THE SPRING BLOOM!

HOW TO HAVE BEAUTIFUL
HYDRANGEAS

CREATE A BACKYARD
ESCAPE WITH AQUASCAPING

BIRDWATCHING IN YOUR
OWN BACKYARD

6 WISDOMS FOR
PERENNIAL GARDENING

BENEATH THE SURFACE
OF HYDROPONICS

GO NUTS FOR NUTRITION

POTWARE AS PLANT-WEAR

PLUS SAVINGS, TIPS & MUCH MORE!

BROCK FARMS MAGAZINE IN THIS ISSUE

- 1 BROCK FARMS: A HISTORICAL PANORAMA
- 3 BROCK FARMS: COLTS NECK
- 4 BROCK FARMS: FREEHOLD
- 5 BROCK FARMS FREEHOLD: A UNIQUE GIFT BOUTIQUE
- 7 6 WISDOMS OF PERENNIAL GARDENING
- 9 GO NUTS FOR NUTRITION
- 13 BIRD WATCHING IN YOUR OWN BACKYARD
- 15 HEALTHY LIVING WITH HOUSEPLANTS
- 16 SMALL WONDERS
- 19 AQUASCAPES BRING BACKYARD BLISS
- 21 OUTDOOR LIVING
- 23 BRING IN THE SPRING BLOOM
- 25 ALL ABOUT KNOCK OUT ROSES
- 27 OH, ORCHIDS!
- 29 CREATE A BUTTERFLY HAVEN
- 35 BUILDING A FOREVER FENCE WITH ARBORVITAE
- 37 BRONZE BEAUTIES
- 39 POTWARE AS PLANT-WEAR
- 41 THE BUCK STOPS HERE
- 43 HAPPINESS FROM HYDROPONICS
- 45 10 TIPS TO FLOURISH YOUR ORGANIC GARDEN
- 49 HOW TO HAVE BEAUTIFUL HYDRANGEAS



IN MEMORY OF

JOSEPH "BEN" CASTRONOVA

IN HONOR OF 46 YEARS OF SERVICE

1936-2008



VISIT BROCKFARMS.COM

DESIGNED BY THINK TANK MEDIA | WWW.THINKTANKMEDIA.CO
EDITED BY LISA SCHOFIELD

MESSAGE FROM EDDIE BROCK

Welcome to our first publication geared to help you make sound and informed purchasing decisions for all your gardening and home-scaping needs. Brock Farms has flourished in the garden center business for 70 years, and I am proud to say that our expertise shows where it counts: our staff, many of whom have been here for a long time because they are passionate about gardening and landscaping.

In those 70 years we have expanded from a small blueberry wagon to a World-Class Garden Center. Our expertise about the products we sell helps homeowners make informed decisions to truly enjoy their homes. Here at Brocks you will find statuary, fountains, an unsurpassed wild bird center, chimineas for your backyard enjoyment and more, plus our Colts Neck location houses one of the largest pond and aquatics departments in the state.

Brock Farms is reminiscent of an era gone by when the owners and the staff take their time to listen to you and work together with you to find the solution that best fits your needs while enjoying the ability to create customer loyalty.

In our Freehold location my sister Linda Brock Arcoleo has a talent for finding the most unique and beautiful gifts, home décor, accent furniture, paintings, lamps and so much more. Please come in and browse for you will surely be impressed with what our Gift Shop and Home Décor department have to offer.

Fall-o-ween© is the season where both locations are boasting over 8,000 square feet of fall and Halloween merchandise for all your

decorating needs including costumes. There is a lot going on for Halloween; haunted walk through, hayrides, pumpkin picking, corn maze and more. Each location has something different to offer so don't miss out on all the festivities.

November is when the awe-inspiring Christmas Wonderland comes alive in our Freehold location. We have over 40,000 square feet of everything you can possibly imagine for Christmas, including Jean Brock's legendary handmade bows and custom-lit wreaths. Don't miss out on our quaint Country Christmas displays at our Colts Neck location. Both locations offer fresh-cut trees, wreaths and garlands. Each store has something unique to offer for all your decorating needs.

Little Eddie Brock could not have envisioned what his blueberry wagon would lead to but all of this has one common thread -- Ed Brock Sr. with the help of his wife Jean have instilled in all of us at Brock Farms an unwavering pride in selling only premium products in every department that are well suited for your needs and are able to help you create your own beautiful home scape.

We welcome browsers to visit either location and just take a stroll; we have been told it is food for the soul. For those of you who are already our loyal customers, it has been our sincerest pleasure to serve you. We hope to have the pleasure of doing business with you and our new customers for many years to come. We thank you for your support!

Ed Brock, Jr.



BROCK FARMS: A HISTORICAL PANORAMA

In life, some things grow strong and hearty.

In 1942, eight-year-old Ed Brock, Sr. picked wild blueberries in the woods behind his boyhood home in Colts Neck and sold them. Even at such a young age, he knew how to pluck only the healthiest, most robust berries. This innate ability would become a hallmark at Brock Farms, where today the immense selections of greenery are those that are the healthiest, sturdiest and most colorful, selected by Ed and his son, Eddie, Jr.

Ed Sr. still owns his boyhood home which holds many memories that are rooted, nourished and cultivated, helping him keep his journey in perspective. Anyone who meets Ed Brock Sr. admires how humble he remains and his sense of traditional ethics, gratitude and humor.

Brock Farms started as a hobby for Ed Sr., selling to servicemen and their families of Earle Naval Base. During the summer he sold to the numerous folks traveling Route 34 to go down the shore. As time went on, Ed persuaded his parents to help watch over his small roadside business while he was at school. Ed's father drove him to the farmers' markets so he could purchase more produce to sell when Ed's father realized the potential his



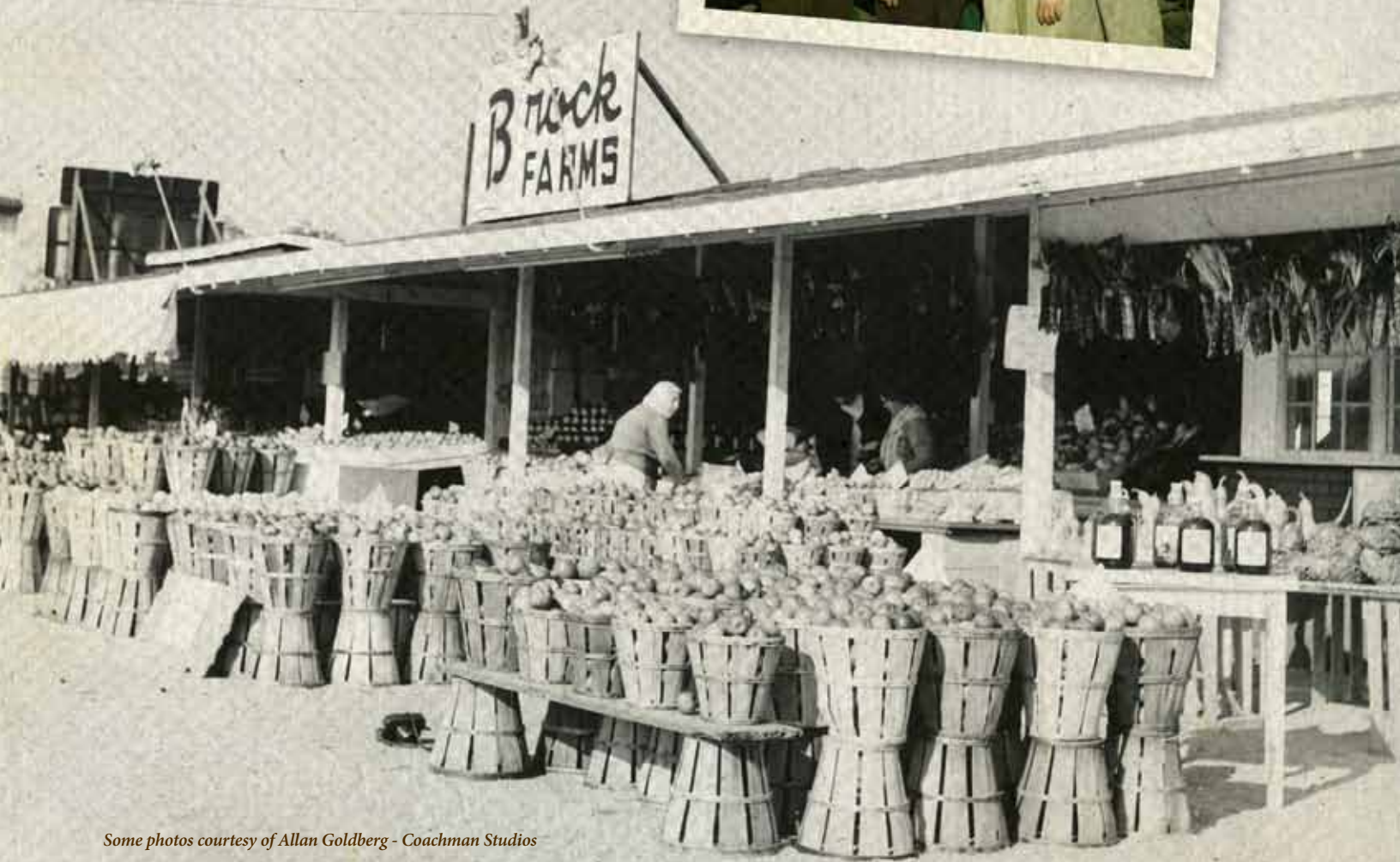
son's business had, so he built him a small roadside market, measuring 12 x 15 feet. At 16, Ed got his farmer's license, which enabled him to go out and investigate farmer's markets all up and down the East Coast.

In 1954 Ed Brock Sr. did two years in the service, specifically, in submarines. When he came home he built his first market on Rt. 9 out of a barracks that he purchased from Ft. Monmouth for \$40.

In 1962, he went back to his Colts Neck "roots" and bought the land on which the complex currently sits from a man for whom he worked as a kid. Ed, his mother and his son, Eddie Jr., ran the business from that location and Freehold.

Quality control -- the desire to offer the best, healthiest plants and trees -- led Ed to purchase 600 acres of prime growing land in Upper Deerfield (south Jersey), for a total of 800 acres throughout New Jersey.

As time went on, both father and son began to cultivate relationships with other nurseries and specialty growers throughout the country. And they also grew from supplying local homeowners to working closely with landscape contractors who trusted the quality of stock from this growing garden center.



Some photos courtesy of Allan Goldberg - Coachman Studios

BROCK FARMS COLTS NECK

Sprawled on a 19 acre complex, including a 14 acre farm, Brock Farms' Colts Neck location features a majestic five-acre retail garden and outdoor center that boasts unique features, and of course, is a haven for garden enthusiasts to wander and enjoy the array of colors and lush greenery.

If you feel your property can be individually punctuated with statuary, pottery and urns, the Colts Neck location offers the largest selection of concrete statuary in the Tri-state area -- more than two full acres boasting a variety of sturdy and visually appealing accoutrements for your customized landscape. But if bronze is more to your aesthetic appeal, you may also enjoy the wide array of bronze statues. Combine concrete statuary with any of a number of beautiful fountains on display; a fountain will also draw many birds for the whole family to enjoy -- even the cat!

Speaking of avian friends, new at the Colts Neck location is the Birdbath and Beyond Wild Bird department, which offers everything one would need to cater to the numerous birds who reside in New Jersey all year long. Here you shall find an abundant selection of bird feeders, homes (single and multi-family!), bat and butterfly houses (they fly too), and of course, bird seed, suet and bird accessories. Oh, and for your four-legged, furry family members, you can find a nice variety of pet supplies such as dog beds, holistic pet foods and accessories.

Brock Farms Colts Neck also boasts the largest pond stock collection in New Jersey -- featuring more than 60 tanks of beautiful healthy fish imported from Israel, Malaysia, Thailand and Japan as well as domestic. Give your fish their own customized landscape with hardy aquatic plants of all varieties; plus you can purchase the hardware such as liners, filters, pumps, fish food - everything you need to get your pond activated in the healthiest way possible. Brock Farms is a proud Aquascapes Pro dealer, one of the very few in the state. Other top-notch pond product brands include Laguna, Tetra, Pondmaster, Ecological Labs and Aquarium Pharmaceuticals.

Also new at the Colts Neck location is a sizable hydroponic department. Hydroponics -- soil-free growing -- can enliven your indoor space and provide you with blooms all year long, as well as cooking spices, herbs and vegetables. This is a rapidly growing trend and is a great way to garden indoors. Imagine fresh tomatoes all year long!



Colts Neck features an extensive line of garden supplies, organics, chemicals, edging/fencing tools, hoses and hose accessories, soils, mulches (bag and bulk), stones, Cambridge pavers, and more.

Roam around our paved, handicap accessible nursery for your evergreens, flowering shrubs, edible crops such as fruit trees, vegetable plants and berry bushes; the greenhouse is busting with flowers, perennials and tropicals. All annuals, Perennials and nursery are picked out in person by Ed Brock Jr. as he visits over 25 greenhouses and nurseries weekly.

The holidays are fun here at Colts Neck: in autumn, select your fall decor including pumpkins (with a pick-your-own field), gourds, mums, cornstalks, hay bales and enjoy hayrides. Check out the fully-automated Halloween shop with more decor and costumes. And although not nearly as voluminous as the Freehold location, Brock Farms Colts Neck has a unique and awesome Christmas experience; you can bring home a fresh-cut Christmas tree, wreaths and garlands, poinsettias and more as well as a 3,000 square foot unique Christmas shoppe.

AT BROCK FARMS

Also unique is the 5,000-square-foot Closeout Barn for specials on high-quality merchandise that are being phased out.

WINTER SPRING SUMMER FALL

Brock Farms has it ALL!

BROCK FARMS FREEHOLD

There exists a modern oasis at 4189 Route 9 North, Freehold. Brock Farms' 39-acre complex is a wonderland for all things garden/backyard-scape related, indoor plant life and unique home decor. Whether you are a do-it-yourselfer, or just want to escape for awhile into verdant luxury, or are seeking the perfect housewarming gift (and of course, something for your own space) -- Freehold's Brock Farms location fits the bill.

The largest retail nursery selection in New Jersey, Brock Farms in Freehold invites you to stroll through multiple greenhouses filled with healthy tropicals, houseplants, and more than 1/4-acre of lush annuals and vegetable plants. Fresh, healthy and hardy perennials are delivered every week from early spring through late autumn. Here, you can find lush evergreens, every color flower possible, flowering shrubs, edible crops, berry bushes, grapevines, vegetable plants, herbs/spices, fruit plants, and shade and flowering trees. New plant stock is delivered most of the year to accommodate new homeowners as well as professional landscapers who work continually.

Brock Farms' Freehold location is singularly distinguished with paved pathways that are also handicapped accessible. (Bright idea: Brock Farms' makes for a terrific afternoon for your children grandchildren to learn all about the various types of plant life!)

Here, too, you will also find a wide variety of outdoor decor -- fountains and garden sculptures of all sizes and themes, from adorable good-luck gnomes to majestic, classical art, and everything in between. Enhance your porch, landscape, foyer or any other room with pottery; select from various materials, sizes and artful styles to house your plants, or anything else!

Springtime is for annuals - come select from the largest inventory of annuals including special varieties not found anywhere nearby, including heirloom and Burpee varieties to take home and cultivate. And don't forget your Easter flowers: fresh, lush, beautiful blooms!

Ponds are trending big -- more and more homeowners are enthralled with this little spot of nature in their backyards (or side). Brock Farms, Freehold, has the largest selection of pond hardware to keep it natural, fit, and awesome: filters, pumps, food.

Birds of all types will be attracted to your pond, as well as your garden. The Freehold location boasts a wild bird department with everything needed to attract a bevy of avian friends: feeders, houses, feed/ suet, accessories and birdbaths. If you want to craft your own al fresco living room, check out the bistro sets, fire pits, chimineas, and more.

Gardeners and DIY-lawn/landscapers will love Brock Farms Freehold's large garden center featuring an extensive line of garden supplies, organics, chemicals, edging/fencing tools, hoses and hose accessories, soils, mulches (bag and bulk), stones, Cambridge pavers, and so much more. Brands featured include Scotts, Jonathan Green, Miracle-Gro, Ortho, Bonide and more.



The Freehold location not only rivals -- but surpasses -- every other regional home decor retailers, and is a must-stop when both decorating your home or office and purchasing unique gifts for all occasions. Giftware/decor manager Linda Arcoleo visits numerous gift and home design tradeshows, bringing back the newest line additions, artisan works and collectibles, throughout most of the year. There is always something new. For those who love to adorn the home and porch for the seasons and holidays, you can find a wide selection of colorful and cheerful flags and related items as well.

And nobody does the family favorite holidays like Brock Farms. Autumn and Halloween, and Christmas are spectacular. During autumn, you and your family can enjoy traipsing through the corn maze and around the acres for pumpkins, gourds, Indian corn, cornstalks, scarecrows, haybales, and related seasonal decor. Halloween is thrilling at Brock Farms -- roam the 5,000-square-foot Halloween shop for costumes, bats, fanged spiders, ghosts, goblins and other spooky totems of this merrily frightful holiday. Take the kids through the huge haunted house and of course enjoy hayrides on beautiful, crisp October weekends.

In early November, Brock Farms in Freehold is magically transformed to New Jersey's top-rated Christmas wonderland. Whether or not you are shopping for a natural or artificial tree and high-quality Christmas decor for inside or outside, strolling through 40,000 square feet featuring huge displays is a great way to spend the afternoon. Jean Brock's peerless tree-trimming flair can be seen on many of the more than 100 artificial trees on display. Trimmed trees are organized by style and dominant color and you will be in full awe. You can obtain a full list of all the products used for each tree should you deem it a must-have for your home for years to come. And don't forget to have Jean craft you a bow; you can watch her in action!

You will also find collectibles from AnnaLee, Jim Shore, Pavillion, Byers Choice LTD. and Lemax Villages. Themes include angels, Santas, elves, and even reindeer. The Christmas shop also offers wreaths, garland and poinsettias in many colors and sizes. Whatever your Christmas -- Rustic to Victorian to modern -- you can create it at Brock Farms, Freehold.

AT BROCK FARMS

Actually, you can create almost anything garden related (and some indoors too) at Brock Farms, Freehold. Visit soon and see for yourself!

WINTER SPRING SUMMER FALL

Brock Farms has it ALL!

Brock Farms Freehold

A UNIQUE GIFT BOUTIQUE

Seeking truly distinctive home accents or gifts?

You won't find them at the big box "home" retailers festooning Route 9.

But you will be enthralled with the huge and ever-changing selection at Brock Farms, Freehold. Browsing is welcome, as are questions. Brock's gift and home decor center is a warm, cozy place to meander, taking your time to alight upon that perfect object for your home, or as a gift that will ensure you are remembered fondly every time the recipient shows it off!

Manager Linda Brock-Arcoleo uses her gut instincts when constantly perusing catalogs or walking the cavernous floors at the annual trade shows, perhaps the largest show for retailers in the US that showcases the latest lines and companies in the gift and home accent categories. Growing up at Brock Farms, and starting the gift department with the fabled Department 56 Christmas Village Collection in 1990, Arcoleo knows what her county-wide customers appreciate and enjoy.

After bringing in the initial Department 56 collection, the Brock family knew that keeping it available all year round was a sound business decision, as people added to their Christmas Village collection throughout the seasons, little by little. This then led to the concept of creating a specialized home decor/giftware department.

Here, you can purchase a sturdy, shiny suit of armor, for example, to stand sentinel in the foyer, or home office, add to a beautiful Victorian (or other) doll collection, purchase finely crafted accent tables, accent plates and platters for the kitchen or dining room, music boxes, kaleidoscopes, lamps, scintillating suncatchers and stained-glass pieces, and so much more. You will also find a large selection of exquisite silk flowers and pre-made custom silk floral arrangements. In addition, you may find the occasional pocketbook, jewelry pieces, scarf and davenport shawls as gifts, or why not for yourself?

After New Year's and again in July, Arcoleo buys quite a bit at the annual trade shows, which focus heavily on gifts that are a season ahead. Throughout the year, she peruses numerous catalogs and constantly networks to ensure that the selection is always updated. She purchases larger pieces in small quantities and will special order for customers who "should have bought it when they saw it."

Whether at the tradeshow or sifting through dozens of catalogs,

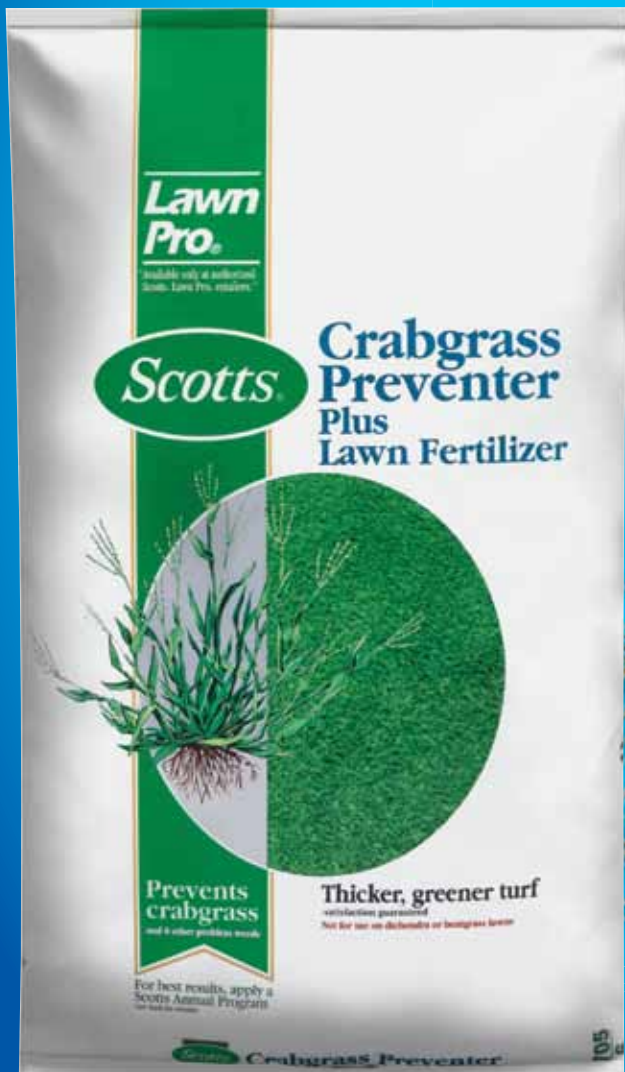


she only purchases from those companies that support independent boutique retailers, so customers will be very hard pressed to find the same items elsewhere. More than that, Arcoleo selects gifts and housewares that are manufactured to a high degree of quality and at reasonable price points. Guided by what she intuitively will sell in the store rather than her personal preferences, the vast selection is broadly appealing with an emphasis on the never-out-of-style antique and country-manner look rather than contemporary or modern fad pieces.

What's popular for 2012 are nightlights (Brock's carries more than 10 lines) and artificial food -- beautifully crafted bowls of M&Ms, popcorn and plates of donuts, cookies, or cheesecake, that are so realistic as a table centerpiece or accent and will be sure to start conversations!

Arcoleo has been lauded widely for her exquisite taste and passion in selecting giftware and home accent pieces. Please enjoy visiting throughout the year; you will want to make Brock Farms your first and must-stop when refreshing a room or purchasing memorable gifts.

DON'T PULL CRABGRASS THIS SUMMER.



**STOP IT
BEFORE
it starts!**
APPLY TODAY*

**Apply in early spring before temperatures are regularly 80° F.*

AVAILABLE AT BROCK FARMS!

Scotts
LawnPro[®]
CRABGRASS PREVENTER
PLUS LAWN FERTILIZER

© 2012 The Scotts Company LLC. World Rights Reserved.

6 WISDOMS of Perennial Gardening!

by R. Denny Blew

When the Brock family asked me to write an article on perennials, I didn't hesitate. For 35 years, my family has partnered with Brock Farms to seek, grow, and introduce exceptional plants to regional gardeners. We know the Brock family as faithful customers and skillful growers in their own right. We also call them good neighbors. We're proud of that association.

Perennial gardening is easy if we make first choices. We begin by creating a "starter list" of reliable plants, which requires applying five key wisdoms to our plant list.

Abnormality is Normal

New Jersey weather is hardly ever "normal." We're too dry one month; too wet the next. I want plants that won't rot away from three days of rain, or dry up if I go down the shore for a week. Also, Jersey isn't trouble-free in terms of temperatures. We get freezes below zero and searing summer bakes. Restricting our plant list to confirmed survivors nearly guarantees our success.

Perfection Is Unrealistic

I do not demand zero-care plants. There's really no such thing unless you're willing to live in a jungle of nature's weeds. If you want zero care, let nature take its course, and enjoy. But that's not gardening; it's non-gardening. And most of us want something more.

Too Much Imperfection is Intolerable

While not asking for perfection, I do ask for plants with adaptability. I want the choices in my list to be able to work in either a touch of shade or a day-long blaze. And I want plants without a reputation for being particularly fussy or chemically dependent.

When You Pay for a Good Seat, You Expect a Show

I want my plants to play major roles. Sure, there are some flashy plants that make a spectacular show for a week or two. But let's set the bar higher by limiting our choices to plants that give us a longer performance or an encore.

Not All Promises are Kept

As professional growers we learn that while new plants promise something better, not all promises come true. New is always more expensive. But not always better. I'm not against new. But new isn't automatically better. I want to know a plant has shown its worth before I open up my wallet.

Timing is Everything

Our gardens shine in spring but not so much later on. We shop early and take home what catches our eye. Our later gardens pale because we don't go back to see those later performers. Serious garden centers re-stock and freshen up just prior to Independence Day, and again for Labor Day. If you follow up with visits around these strategic post-spring dates, your summer and fall season gardens will transform.

My Recommendations for the Spring Garden



Aquilegia, Origami Series

The first re-blooming Columbine; available in yellow, red, and blue.



Astilbe - Visions Series

First Astilbe with respectable drought tolerance; oink, rose red and purple forms.



Hardy Geranium

My favorites are the rosy "Alpenglow" and the blue "Rozanne" but many varieties are good.



Hemerocallis - Early Bird Series

Super-early Daylilies, available in "Cardinal Red" and "Oriole Orange."



Heuchera "Plum Pudding"

A "wow" foliage plant of dark wine leaves hold color for many months.



Hosta "Francee"

Hostas are shade lovers and very few have full sun tolerance; this one is different.



Leucanthemum (Shasta Daisy)

"Becky's" and "Snowcap" break through with superior disease resistance.



Nepeta "Walker is Low"

Compact Catmint with ever-persistent flowers.



Salvia (Sage)

I like 'Caradonna', 'May Light', 'Blue Hill', and the white form 'Snow Hill'.



Veronica "Royal Candies"

The cleanest, most compact, and longest blooming.

My Recommendations for the Summer Garden



Agastache "Blue Fortune"

There are many varieties peddled in the Hyssop family; this one is the hardiest.



Coreopsis "Zagreb"

Most compact and behaved from this beloved plant family; weed-choking density.



Echinacea "Vintage Wine" (Coneflower)

Many new varieties claim hardiness, this one lives up to the claim.



Helium (Helen's Flower)

Seek the yellow "Double Trouble," orange "Mardi Gras" and "Ruby Tuesday."



Hardy Hibiscus

Sun lovers, but "Fireball," "Kopper King" and "Party Favor" can tolerate slight shade.



Miscanthus (Maiden Grass)

My best variety packs are "Adagio," "Dixieland" and "Gold Bar."



Monarda "Coral Reef"

The most disease-resistant member of the Bee Balm family.



Perovskia (Russian Sage)

I especially like the new form "Lacey Blue," but all varieties are good.



My Recommendations for the Fall Garden



New York Asters, New England Asters

Like mums in habit but way hardier; lots of great varieties.



Anemone "Pretty Lady Diana"

The first really compact, non-floppy form of the fall Anemone.



Chelone "Hot Lips"

The improved form or four native Turtlehead flower.



Eupatorium "Little Joe"

The short and sweet behaved form of our native Joe Pye flower.



Muhlenbergia (Muhly Grass)

A three-foot, airy cloud of rosy pink that lasts into winter.



Hemerocallis "The Jury's Out"

Dumb name, smart plant, my pick for best late Daylily.



Panicum "Northwind" (Switchgrass)

Improved native, strongly erect and non-flopping.



Rudbeckia "Goldsturm" (Black Eyed Susan)

Unfailing, showy, persistent blooming.



Solidago "Little Lemon" - Sweetheart shorty version of our native Goldenrod.

You Have Your Assignment

So, there are my picks for the good show, non-fussy, proven, adaptable, all-around survivors. They'll make you look like a pro gardener! In the future we can talk about specific application plants, pruning, end-of-year cleanup, and so forth. Go garden!

R. Denny Blew grew up on a family farm. He earned degrees from the American College of Quito, Ecuador, and Delaware Valley College of Science and Agriculture. He is past president of the South Jersey Nurserymen's Association, former director of the Cumberland County Board of Agriculture, serves as an ongoing instructor to the NJ Agricultural Leadership Development Program, and has been a professional plant grower and tester for the last 37 years.

GO NUTS FOR NUTRITION!

Plant a Vegetable Garden & Enjoy the Delicious Health it Brings!

Our busy lives make us increasingly concerned about our family's health and wellness. More and more of us are seeking natural, wholesome foods to keep us moving along. Nutrition Business Journal recently identified 10 key trends in the food industry – eight are directly linked to health and nutrition. These trends correspond to a rising demand for foods rich in antioxidants and other nutrients.

Antioxidants are naturally occurring molecules found primarily in fruits and vegetables that help protect your body's cells from damage caused by free radicals. Experts say cells damaged by free radicals can be the root cause of many chronic diseases, cancers and even arthritis. A diet that contains antioxidants plays a role in strengthening the immune system, and is believed to lead to healthy aging.



The best source for antioxidants is fresh fruits and vegetables high in vitamins A, C and E, beta-carotene, selenium and lycopene. The good news is these are all included in home gardening favorites like cucumbers, lettuce, peppers and tomatoes.

Beta-carotene: You'll find this antioxidant in fruits and vegetables with red, orange and yellow hues. It can be converted to vitamin A, which is essential for bone development and proper vision.

Vitamin C: Also known as ascorbic acid, vitamin C is needed to form collagen in bones, cartilage, muscle and blood. It also helps the body absorb iron. Besides citrus fruits, this antioxidant vitamin is also found in peppers and other vegetables.

Lycopene: Found often in red-colored vegetables, this carotenoid is present in your skin, liver, adrenal glands and lungs. With other nutrients, numerous studies show lycopene reduces incidence of cancer, cardiovascular disease and macular degeneration in the eye -- as well as supports prostate health, notably in cases of BPH.

AT BROCK FARMS

Both locations bring you the largest selection and the finest quality of fruit trees, berry vines, vegetable and herb plants. Hundreds of varieties to choose from. YES! We have heirloom varieties as well.

Tending a garden is great exercise, and can even be a stress reliever that reconnects us with nature. Besides the benefits of gardening, here are a few quick tips for healthy eating:



- 1. Start your meal with a simple, fresh salad and fill up with good stuff!*
- 2. Use color as a guide to fill your plate. You'll naturally seek out green and red veggies to balance your meats and starches.*
- 3. Always cook extra vegetables to keep as leftovers. Even if your time is limited, you can have veggies with every meal.*
- 4. Just like plants, we need plenty of water. Drink at least one large glass of water before or with every meal.*
- 5. Seek out higher nutrition in every bite. Add a slice of tomato or spinach leaves to increase the value of your main dish.*

The renewed interest in home vegetable gardening across the country reflects consumers' growing interest in nutritional issues such as weight control, healthy aging and immune system health. While there is no "magic bullet" for promoting overall health, choosing food higher in antioxidants comes close.

Now home gardeners can grow high-nutrition vegetables, too. Special plant collections such as new BOOST from Burpee Home Gardens, gives your garden an extra-healthy immunity boost. These plants were specially selected for their higher nutritive value, and are already creating plenty of buzz among gardeners.

For more information, and to learn more benefits to gardening, visit www.burpeehomegardens.com.

First from Burpee Home Gardens...
high-nutrition
vegetables

BOOST Antioxidant Collection Nutritional Features	
Cucumber <i>Cucumis sativus</i>	500% more*
Gold Standard	
Beta-carotene	65% more*
Pepper <i>Capiscum annuum</i>	20% more*
'Sweet Heat'	30% more*
Vitamin C	30% more*
Salad	40% more*
Healing Hands Salad Mix	
Lutein	55% more*
Beta-carotene	40% more*
Flavonoids	
Cyanins	
...	300% more*



Your garden success starts here.
Available at Brock Farms



© 2012 Ball Horticultural Company BHC12280-BF * denotes a registered U.S. trademark of either Ball Horticultural Company or W. Atlee Burpee Co., which may be registered in other countries.

burpeehomegardens.com



The Garden Products Specialists

Heading up the popular 'grow your own' revolution, Gardman Grow-it has all you need to help you grow delicious, healthy fruit and vegetables. You'll be helping to reduce food miles and grocery bills too. And with great pricing on growbags and growhouses, Gardman can save you even more.

www.gardmanusa.com



4 Tier Growhouse
For seed-starting & protecting young plants
size: 2' 3" W x 1' 6" D x 5' 3" H
R687



Reusable Growbag
Great for tomatoes, peppers, etc
size: 39" L x 16" W x 9" H
7500



Foldaway Garden Kneeler & Seat
Use either as a handy garden seat or turn it upside down and use as a kneeler
22" wide
R616

AVAILABLE AT BROCK FARMS!

DON'T MISS THESE GREAT OFFERS FROM BROCK FARMS!

APRIL 1-30 2012

20% OFF!

Any One Regular Price Item

Not valid with other offers, bagged or bulk items or sale items.

Must present THIS original coupon at time of purchase. Copies will not be accepted.

SEPTEMBER 1-30 2012

20% OFF!

Any One Regular Price Item

Not valid with other offers, bagged or bulk items or sale items.

Must present THIS original coupon at time of purchase. Copies will not be accepted.

MAY 1-31 2012

20% OFF!

Any One Regular Price Item

Not valid with other offers, bagged or bulk items or sale items.

Must present THIS original coupon at time of purchase. Copies will not be accepted.

OCTOBER 1-31 2012

20% OFF!

Any One Regular Price Item

Not valid with other offers, bagged or bulk items or sale items.

Must present THIS original coupon at time of purchase. Copies will not be accepted.

JUNE 1-30 2012

20% OFF!

Any One Regular Price Item

Not valid with other offers, bagged or bulk items or sale items.

Must present THIS original coupon at time of purchase. Copies will not be accepted.

NOVEMBER 1-30 2012

20% OFF!

Any One Regular Price Item

Not valid with other offers, bagged or bulk items or sale items.

Must present THIS original coupon at time of purchase. Copies will not be accepted.

JULY 1-31 2012

20% OFF!

Any One Regular Price Item

Not valid with other offers, bagged or bulk items or sale items.

Must present THIS original coupon at time of purchase. Copies will not be accepted.

DECEMBER 1-24 2012

20% OFF!

Any One Regular Price Item

Not valid with other offers, bagged or bulk items or sale items.

Must present THIS original coupon at time of purchase. Copies will not be accepted.

AUGUST 1-31 2012

20% OFF!

Any One Regular Price Item

Not valid with other offers, bagged or bulk items or sale items.

Must present THIS original coupon at time of purchase. Copies will not be accepted.

MARCH 1-31 2013

20% OFF!

Any One Regular Price Item

Not valid with other offers, bagged or bulk items or sale items.

Must present THIS original coupon at time of purchase. Copies will not be accepted.

**OFFERS VALID AT BOTH
BROCK FARMS LOCATIONS!**

Brock Farms Freehold

4189 Route 9 North Freehold, NJ 07728

Phone: 732-462-2700

Brock Farms Colts Neck

375 Route 34 Colts Neck, NJ 07722

Phone: 732-462-0900

**THE ONLY THING IN YOUR YARD
THAT SHOULD BE GROWING
LIKE WEEDS IS YOUR CHILDREN.**



Weed Beater **ULTRA** is a new, modern form of weed control for your lawn. It works very quickly, even in cooler Spring temperatures as low as 45 degrees. Weed Beater **ULTRA** controls over 200 different types of broadleaf weeds including the hard to kill weeds that always give you a problem.

Pick up Weed Beater **ULTRA** at your local retailer today. You'll have lawn weeds under control in no time.



TRUSTED SINCE 1926

BONIDE[®]

To download your **FREE APP** that can answer thousands of gardening questions and to learn more about Bonide products, visit www.Bonide.com

AVAILABLE AT BROCK FARMS!



BIRD WATCHING

In Your Own Backyard



If you like watching the fluttering, frolicking and whimsical nature of birds, you should know that watching birds in your own backyard, right outside your window, can really be joyous. It's extraordinary just how many different types of birds you can observe. If you haven't noticed many birds in your backyard, there are a few things you can try to attract them. With a great birdhouse or two, birdbaths, and different types of bird feeders, it won't be very long before you have some special visitors.

If you put a birdhouse in your backyard, there is a real chance that birds will nest in it. They'll not only visit the birdhouse on occasion, but if it's warm and secure, they may choose to make it the spot where they hatch their babies. What a delight this can be! You may even get a quick look at the babies every once in a while, especially when it is time for them to learn to fly. A birdhouse is not only a charming decoration for the backyard, but it is a place the birds will love to be as well. There are obviously different types, sizes, and shapes of birdhouses, and what you decide upon depends on your individual preference.

You'll find that there are many different bird feeders available, and the majority of them can be put into three different categories. There are tube feeders, hoppers and tray feeders. Tube bird feeders are cylindrical, with a perch at the hole where the bird seed comes out. Tube bird feeders are good for a variety of seed types, as long as the opening is wide enough for seed to emerge. Hopper feeders will be appealing to birds that may be cautious of tray and tube feeders. Tray feeders are ideal for smaller birds.

If it doesn't really matter to you which types of birds come to your backyard because you enjoy any kind of visitor, you can purchase a general bird seed food. This food attracts a number of different kinds of birds, since it's has several different kinds of seed. If you would prefer to have a specific type of bird visit your yard, then you should include a seed or food that appeals to that particular species.

Here are some things to keep in mind to create a good birdhouse.

1. Fledgling ladder or textured front wall

Inside the front wall of every birdhouse, nestlings need a ladder or textured surface to dig their tiny claws into. They must be able to climb to the entry hole in order to fledge. If your birdhouses are made of very smooth materials, it will be necessary to etch horizontal grooves, forming a "ladder" for the fledglings to climb. Simply gouge tiny lines about 1/2" to 1" apart from the bottom of the box to the entry hole.

2. Smooth and safe entry hole

Birds are diligent about keeping their feathers in excellent condition. Their lives depend on it. If the entry hole is jagged or has any sharp protrusions, this will damage feathers each time a bird enters or exits the box. Run your fingertip around the entry hole of your birdhouse. If you feel any rough spots, sand them off with fine-grain sandpaper. This should be done every year when you clean out the old nest. If the entry hole has been compromised by a squirrel, you may be able to affix a hole guard over the top.

3. Ventilation and Drainage holes

Without air flow, bird boxes can become too hot or the air can become unhealthy for young birds to breathe. The entry hole itself does not provide enough fresh air so you need to add a few ventilation holes if they are not present in the birdhouse. Ventilation holes should be located near the top of the box, preferably under the protective lip of an overhanging lid.

The nest box should have holes in the bottom, not for ventilation, but for drainage. These too are essential. Drainage holes prevent boxes from filling with rain and help keep nests dry if they become damp. Some species, like bluebirds, don't mind if their nests become wet sometimes. Check for holes in the floor of the box. They may be located in the middle or at the corners. If there are no drainage holes, make some with a drill. Drainage holes can be 1/8" to 1/4" in diameter. Sometimes holes



will become clogged with nest debris so be sure there are enough holes to allow for proper drainage.

About Bird Food

There are many types of seed available that you will encounter when you go to buy bird seed. Here is a brief field guide to seeds, what feeders to put them in, and what birds are most attracted to them.

Black Oil Sunflower

This is the most popular seed at feeders. You can usually buy it in a variety of size bags. Often it is placed with other seeds to form what is called a mixed seed. It should be the start of any feeding station.

- **How to offer:**

It is best offered in hanging tube feeders and hopper feeders.

- **Birds that like it:**

It attracts a lot of species of birds including chickadees,

titmice, nuthatches, goldfinches, house finches, cardinals, grosbeaks, and jays.

Striped Sunflower

This is a larger type of sunflower seed that has a lower fat content and a harder shell. It is black with white longitudinal stripes. It is harder for birds to open and not favored by birds as much as black oil sunflower seed.

- **How to offer:**

It is best offered in hanging tube feeders and hopper feeders.

- **Birds that like it:**

It attracts the same birds as black oil sunflower seed — chickadees, titmice, nuthatches, goldfinches, house finches, cardinals, grosbeaks, and jays.

Thistle Seed

This is a very tiny black seed. It does not come from native thistle plants but is imported from Ethiopia and India. It is sometimes referred to as “Nyjer” seed.

- **How to offer:**

Since this seed is so tiny it must be offered in special feeders that have small seed portals that will prevent the seed from spilling out. These are usually plastic tube feeders, wooden feeders with fine wire mesh, or just plain wire mesh feeders.

- **Birds that like it:**

This is one of the favorite seeds of goldfinches. Other related birds who like it are house finches, purple finches, pine siskins, and redpolls.



AT BROCK FARMS

Both Brock Farms locations carry a huge assortment of birding supplies, foods, fountains and birdhouses.

HEALTHY LIVING WITH HOUSEPLANTS

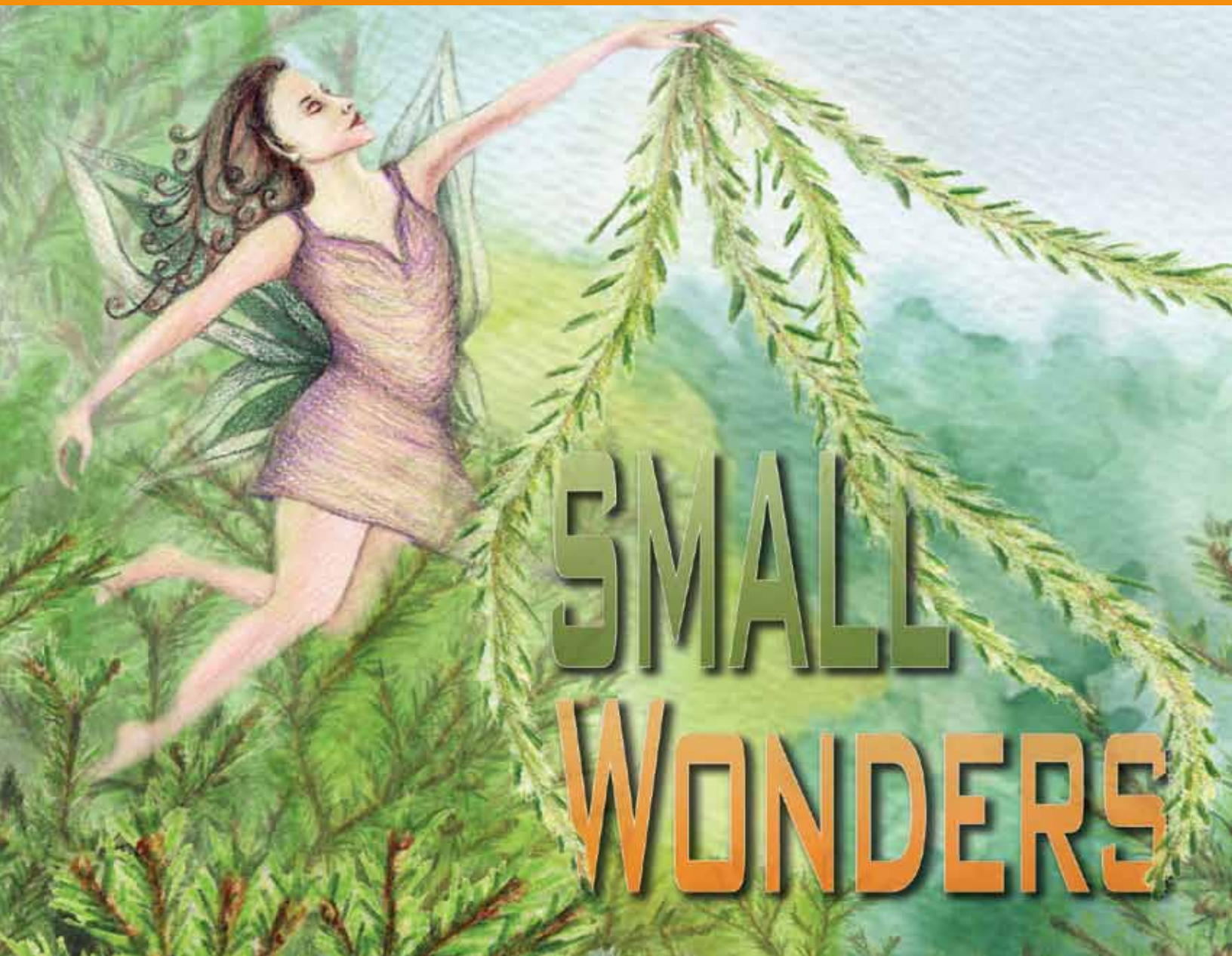
- IMPROVE AIR QUALITY.
- REDUCE TOXIC CHEMICALS IN YOUR HOME.
- REDUCE POLLUTANTS IN ENCLOSED SPACES UP TO 87% IN JUST 24 HOURS.
- CREATE A SENSE OF RELAXATION AND WELL-BEING TO HELP REDUCE STRESS.
- RAISE THE HUMIDITY LEVEL IN YOUR HOME.



AT BROCK FARMS

Both locations, especially Freehold, carry a tremendous selection of indoor and tropical plants.

ADD AT LEAST ONE HOUSEPLANT TO YOUR HOME TODAY!



Gardens can be a wondrous place, and nothing brings that wonder to a garden like a small plant that seems to fit perfectly. At Russell's Nursery, we grow plants that are selected to add that wonder to the garden. We call this group of plants "Small Wonders," and their magic doesn't stop with just their small growth habits.

Each plant in Small Wonders is brought to the garden by a Fairy whose personality reflects the Small Wonders in its group. From the Blue Fairy who feels very strongly that all blue foliage plants are best, to the Miniature Fairy who collects almost as much jewelry as she

does plants. This year, when you visit either Brock Farms location, you will see a beautiful selection of Small Wonders offered at values that have never been given before on these great plants.

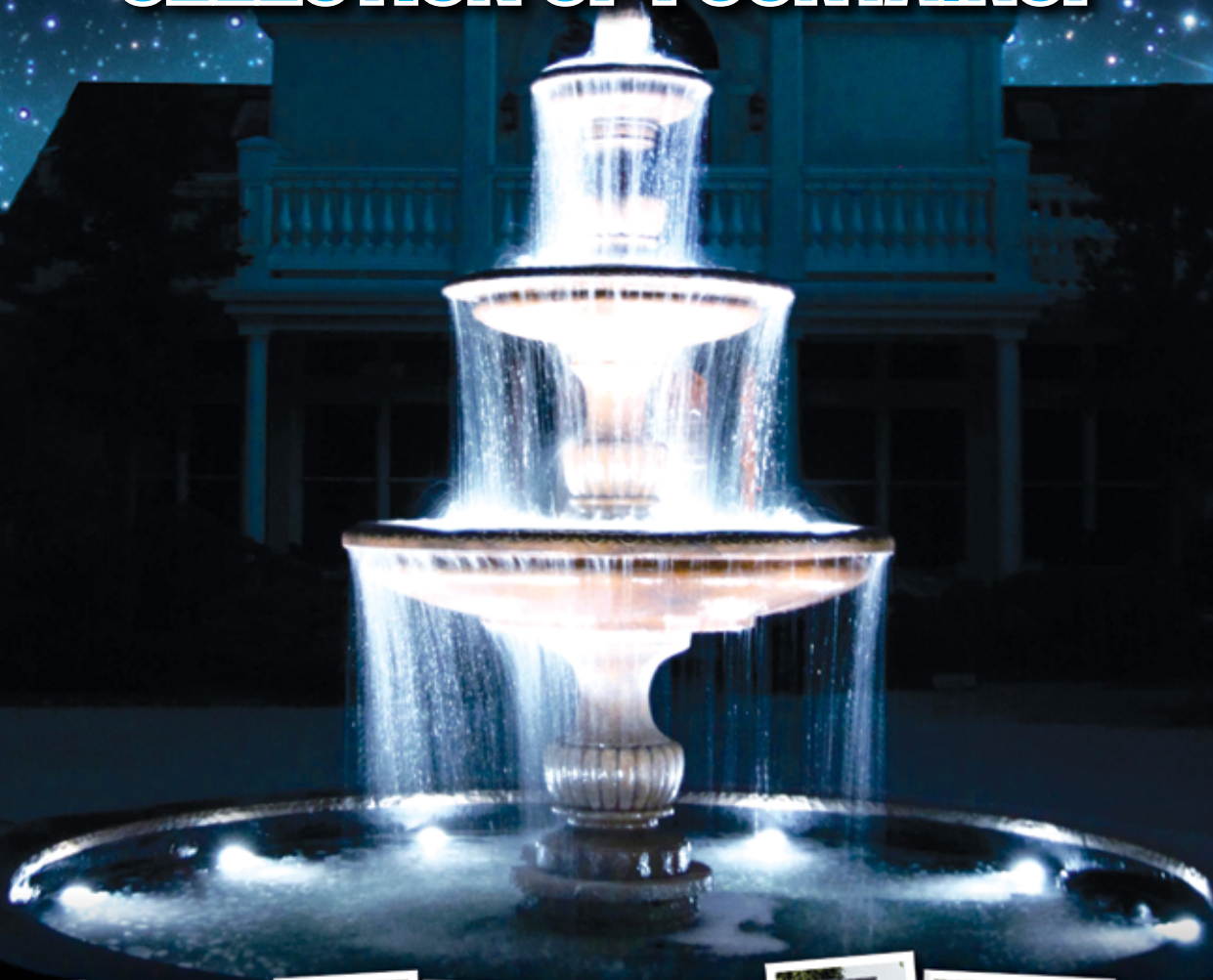
You'll also get a chance to get an answer to a question that all gardeners have asked after seeing a plant: How old is this plant? Each Small Wonder has a birth year printed on the front of the tag. All of the plants in the Small Wonders program will be a minimum of seven years old this year, which gives you an idea of the time and care that has gone into growing them.

If you're a first-time gardener or a practiced Master Gardener, there will be a Small Wonder you will love. From the dark forest-green needles of the Bosnian Pine "Green Bun" to the vivid blue colors of the Serbian Spruce "Geunter," they will all find a space to call home in your garden.

Russell's Nursery is proud to have Brock Farms Home and Garden as the exclusive home for our Small Wonders program, and we look forward to you visiting this year to see fantastic plants and maybe even spot a Fairy or two.

Article and artwork by Russell's Nursery

BROCK FARMS HAS THE TRI-STATE'S LARGEST SELECTION OF FOUNTAINS!



AT BROCK FARMS

Both locations bring you the largest selection and the finest quality fountains in many different sizes, colors and styles. Come visit our beautiful four acre fountain and statuary display.





Michael Carr Designs



BIRD BATHS & RESIN STATUARY



Ceramic Bird Baths: A new introduction to the Michael Carr collection, these Ceramic Bird Baths will add a splash of color to any yard or garden.

Resin Statuary: These cute and life-like creatures add personality and charm to any yard or garden. Each critter is hand-made from durable poly resin and has a U.V. coating that resists cracking or chipping from the sun.



AVAILABLE AT BROCK FARMS!



Aquascapes

Bring Backyard Bliss

When it comes to impressive landscaping features, nothing makes a more picturesque statement or provides more serenity in your yard than a pond. No matter what the size, adding aquascaping to your property brings in an immediate impact and an architectural element that you cannot get from any one tree or feature alone.

Whether you decide to enlist the help of a professional, or choose to go it alone, there are two basic ways to install a pond in your landscape design. One is to purchase a preformed plastic or fiberglass pond. Not only are they inexpensive, they now come in hundreds of sizes and shapes. Best of all, they install in one day.

The second way to build a pond is to actually dig a freeform hole and purchase a pliable vinyl liner that will be laid into the hole, just like a vinyl pool. While each method has its pros and cons, both are relatively simple and will allow you to install an 11' x 16' pond (which is a nice size) for a very reasonable price.

So You Want A Pond. What Next?

The first thing to decide is what type of pond you want to build. You should consider what type of aquatic life you want in the pond. Is it going to be a home for goldfish or koi? What kind of aquatic plants do you prefer? Do you want a waterfall? Do you want a unique shape or something more standard? Each type of pond will need to be planned for its specific features, and this is generally best done through a landscape plan. Keep in mind that the most common mistake water gardeners make when building their

first pond is making it too small. A small pond is limited in the number of fish and plants you can add. Further, smaller ponds actually require more maintenance to retain balance.

Since we live in a winter climate where the temperature drops below freezing, you will need your pond to have at least one area that is deeper than 2 feet. This will allow your fish to survive the winter.

2 The second step in establishing a new pond is to select the proper location. Most people enjoy their ponds more if they are installed close to the home and in clear view. Since ponds add tranquility and attract wildlife like birds and butterflies, choose a prominent place so that you can enjoy the beauty.

Position the pond where runoff from rain will not flow into the pond. Rain may carry fertilizers, chemicals, and organic debris via runoff into the pond. Avoid placing a pond too close to trees. Falling leaves and other debris must be removed from the pond. You will want to place your pond where it will receive at least four to six hours of direct sunlight if you want to grow water lilies. Shade is fine for fish-only ponds.

3 Now that you have decided on the size, shape, and placement, you can focus on the details of your new waterscape. Make sure you have some means of water circulation with a waterfall or pump. This will allow you to keep more fish and avoid dealing with a stagnant mess. Also, a waterfall adds a tranquil sound that contributes to the overall effect.

Make sure your hardscaping is done before you pick out your lilies and plants. You don't want to find out that your pond is not running or landscaped correctly after you fill it with fish and vegetation. The best thing to do is to fill it with water and let it run for a few days to make sure all is well.

Once everything checks out, bring the family to Brock Farms, Freehold, which specializes in ponds and make your pond beautiful.

AT BROCK FARMS

Our Colts Neck location is one of the largest pond dealers in the state. Stocking thousands of fish and aquatic plants, hardware and supplies.

About Koi

First bred in Japan in the 1820s, koi or nishikigoi are the national fish of Japan. The word “nishiki” describes a colorful brocade in Japanese and “koi” means carp. Therefore, nishikigoi can be roughly translated to “colorfully brocaded carp.” Koi are thought to have originated in the Middle Eastern region now known as Iran from the common carp. Over a thousand years ago, carp were widely traded as a staple food source, exported to Japan, China and Western Europe.



*Before you buy koi for your pond,
be aware that they can live
longer than 100 years.*

- Just like any pet, koi come in different qualities and vary in cost. Many koi are rated by breeders as High Quality. These koi come from some of the top breeders in Japan, and are bred from the finest bloodlines of show champions. The High-Quality rating is the result of breeders evaluating physical size, physical characteristics, patterns, colors, and overall behavior.
- The ideal setup for koi is a pond of at least 1000 gallons with a fine gravel substrate, rocks and hardy plants. Koi like to eat the roots of plants and will dig to get to them, so be sure to anchor and protect plants by placing large rocks around their bases. Also, provide adequate filtration to maintain proper water conditions.

One last note: Before you buy koi for your pond, be aware that they can live longer than 100 years. So, if you're not prepared for the investment of time and money, buy goldfish instead.

It's true, nothing makes a more dramatic statement or provides more serenity in your garden or yard than a pond. No matter what the size, adding a pond to your landscape makes an immediate impact and adds an architectural element that you cannot get from any other feature.



OUTDOOR LIVING

Comfort & Luxury from the Inside Out...

Sitting comfortably with family and friends in the backyard on a cool summer evening with a warm fire and dinner sizzling on the grill is pure pleasure. It is also the precise reason why people are turning their yards, patios and decks into inviting outdoor living spaces. Extending the comfort and luxury of the home's interior into the great outdoors has become a popular trend.



Low-voltage systems can light an entire garden space with as little energy as that required to illuminate a kitchen with a few can lights. Now there are even table lamps and chandeliers available for outdoor use.

Outdoor fabrics have changed dramatically beyond the stiff canvas available only a few short years ago. Advances in solution-dyed acrylics have resulted in fabrics that are soft, durable and weather- and fade-resistant. Thus, the plushness of interior living comes outside with the possibility of draperies, floor coverings, cushy furniture

and luxurious throw pillows.

The Outdoor Kitchen

Just as the kitchen inside the home provides the central gathering place for family and friends, the outdoor kitchen has become the heart of the garden. Appliances and finishes that used to be available only for interior applications have been perfected to stand up to the elements, so people are building significantly more elaborate and useful outdoor kitchen areas. Cooking outside actually becomes part of the entertainment, with rotisserie grills, outdoor taps and pizza ovens taking center stage.

The Well-Lit, Cushy Outdoor Room

The concept of outdoor rooms has expanded far beyond the backyard picnic table under an oak tree thanks to two big technological developments: low-voltage lighting systems and weather-resistant fabrics.

The Spa Retreat

One of the fastest growing design trends is integrating a private bathing experience into the garden, whether it's a beautiful cedar Japanese soaking tub or a small outdoor shower. Above-ground spas have come a very long way, both aesthetically and functionally. Also, radiant floor heating – once used

AT BROCK FARMS

Both Brock Farms locations carries the largest selection and the finest quality outdoor living decorative and functional accents, sure to make any patio or deck feel like home.

only indoors or to thaw driveways – has contributed to the growth of this trend. One easy way to create a more intimate feeling is to situate a spa within a garden setting instead of placing it in the more traditional public space adjacent to the swimming pool.

4 WAYS TO CREATE THE PERFECT OUTDOOR ROOM

1. Intimacy

Create structure, a sense of at least one or two walls, or even a ceiling. Use trellises on one open side to give a sense of enclosure.

2. Comfort

Select comfortable patio furniture that invites people to settle in for an extended period of time. Cushy furniture, luxurious throw pillows, and floor coverings all create an invitation to “stay a while.”

3. Lighting

To extend the amount of time spent outdoors, consider lighting for pathways, around pools, or to accentuate

landscaping. Supplement permanent lighting with candles and lanterns.

4. Nature

Connect with nature by including all the elements: Earth (plants in pots), Water (fountains and birdbaths), Fire (outdoor fireplaces) and Air (wind chimes).



AVAILABLE AT BROCK FARMS!

BRING IN THE Spring BLOOM!

Bring the freshness of spring into your house with blooms from your garden. The nourishing air of spring makes it unnecessary to go to the florist. Your garden will provide all that you need this season. Colorful flowers arranged in generous bunches with fresh greenery will add a splash of color to your rooms.

Gathering the Blooms: Pick garden flowers slightly before they are completely open. Trim their stems and excess leaves. Make sure the stems are immersed in water when trimming. For “filling” the arrangement, choose from the available greenery in your garden.

Scent: The fresh scent of many blooms is enough to leave a lingering trace of fragrance in your rooms and hallways, but if you want more of it, add twigs of scented herbs like sage, mint, thyme or rosemary to your arrangement.

Large Arrangements: Large vases or urns filled abundantly with seasonal small blooms look stunning. You can fill the vase with flowers of one single variety or color, or use bunches of mixed flowers.

Small Arrangements: Small containers with a few blooms or even a single bloom are exactly what your windowsills and side-tables need. Get creative with the containers and put to good use all your vintage cans and teacups.

Shaping: Spring blooms look most beautiful when left to flow naturally from any container. Leave the formal arrangements for luxurious Winter Holidays and fill your vases with informally arranged bunches, allowing them to trail naturally.

Placing the Arrangement: Place large vases in safe and open areas but go for small, practical arrangements for small spaces, bathroom, cloakroom etc. Transform hallways and dark corners with the introduction of a vase of flowers. Cleaned and polished fireplaces and mantles can be cheered up with flamboyant arrangements whereas a single bloom or small baskets will beautify empty windowsills. Tussie-Mussies can be used to adorn all doorknobs.

AT BROCK FARMS

Both Brock Farms locations stock the healthiest and largest selection of Proven Winner, Burpee and Goldfish plant varieties and much more!

We Now Stock Indoor Gardening Products by

Supreme®-HYDROPONICS™
By Danner Manufacturing, Inc.



AVAILABLE AT

BROCK FARMS

(COLTS NECK LOCATION ONLY)

All About Knock Out™ ROSES

Many beginner gardeners are afraid to try growing roses because they've heard how difficult roses can be to cultivate. Knock Out roses are a variety of rose that have a reputation for minimal care with outstanding results. Because they can grow well in several USDA zones, they are one of the more popular roses on the market. When it comes time to decide on landscaping for your home or business, consider the Knock Out™ rose.

IDENTIFICATION

The Knock Out rose is a shrub rose that grows to around four feet tall and three to four feet wide. This rose variety features foliage that is deep green with a maroon under-coloring and maroon highlight on top of the leaf. The blooms are anywhere from three to four inches in diameter and bloom about every six weeks. Bloom clusters are generally two to five flowers, with up to 30 blossoms on each flowering branch. Knock Out roses are usually bright red, but some deep pink, light pink and white varieties are growing in popularity. The scent of the roses is usually described as spicy and of a light intensity.



BENEFITS

The Knock Out rose is a very disease-resistant subspecies of rose, allowing gardeners without much experience in maintaining roses to realize growing success with this variety. Knock Out roses are also low maintenance and don't require the time-consuming process of "deadheading," or removing spent blooms to encourage the growth of new ones. This shrub rose is also extremely pest resistant, requiring fewer applications of pesticides. Finally, Knock Out roses can survive and thrive in a variety of conditions, from wintry zones to those with high heat.

HISTORY

Knock Out roses were developed by William Radler, a Wisconsin rose breeder, and won the All-American Rose award in 2000. In its first year on the market, the Knock Out rose sold more than 250,000, setting a record for the fastest-selling new rose.

AT BROCK FARMS

Both locations carry a huge selection of Knock Out, Hybrid Tea, Shrub/Carpet, Florabunda/Grandiflora & Climbing Roses.

2012 BROCK FARMS EVENTS CALENDAR

DATE	EVENT	LOCATION	TIME
April 21	Ask the Experts Soil Testing, Cambridge Pavers Demonstration. Many manufacturer representatives on hand!	Freehold	10:00 AM - 5:00 PM
May 19	Ask the Experts Soil Testing. Many manufacturer representatives on hand!	Colts Neck	10:00 AM - 5:00 PM
June 9	Water Garden Festival Free seminars and many manufacturer representatives on hand!	Colts Neck	10:00 AM - 3:00 PM
Sept. 15	Closing Your Pond Seminar by Dan Berg from Laguna	Colts Neck	10:00 AM
Sept. 22	Fall-O-Ween Begins! Haunted house, hay rides, pumpkin picking, corn maze and much more!	Freehold Colts Neck	Sept. 22 - Oct. 31
Nov. 10	Christmas Extravaganza! NJ's largest Christmas display with decorations, trees, ornaments, gifts and so much more!	Freehold	Nov. 10 - Dec. 24

**CALL FOR FUTURE EVENTS - "BUILD A POND DAY"
AND OTHER UPCOMING SEMINARS!**

Brock Farms Freehold

4189 Route 9 North Freehold, NJ 07728

Phone: 732-462-2700

Brock Farms Colts Neck

375 Route 34 Colts Neck, NJ 07722

Phone: 732-462-0900

*Event dates and times subject to change or cancellation. Please call to confirm.

OH, ORCHIDS!

The exotic orchids are an elegant and particularly long-lasting type of flower. Known for their resilience, an orchid is both prized in the home and out in the garden. There are many different types of orchids – from Anota Violacea orchids to Canda orchids, which originated in India. However, the most common types of orchids for the home are the Phalaenopsis orchids and the Dendrobium orchids, both of which produce blooms of unmatched beauty and strength – with flowers that will remain in bloom for long periods of time.

Orchids will thrive in a tropical environment.

Phalaenopsis Orchids

Phalaenopsis orchids are known as the “moth” orchid because of the fluttering appearance of their flowers that resemble a moth’s wing movement in flight. These plants are ideal for growing indoors and can make a beautiful addition to any home décor, garden or patio. Phalaenopsis orchids bloom early summer though fall with flowers that can last for months in the right temperatures (warm with lower light). This type of orchid is one of the best for those that are beginners or new to having a green thumb due to their ease of care and variety of color – from basic white to pink, yellow red and green.

Dendrobium Orchids

There are over 1600 species in the Dendrobium Orchid family, with flowers in every color combination that grow pendant like stems of fragrant flowers. These orchids grow quickly throughout the summer, but take a long rest during the winter. However, with such a wide variety of species in the Dendrobium family – some may bloom at other times of the year as well. Regardless of type – all Dendrobium orchids require bright light, small pots, well-drained mixes and humidity between 50 and 70 percent.

Sleeping buds erupt into shoots from the base mainly in spring, and

a few variations bloom also bloom in autumn and turn light golden brown, about 2 or 3 minutes. Watch them carefully to avoid burning. As soon as they begin to turn brown remove from the heat.

Orchid Care

Orchids are famous for their wonderful blooms that seem to last forever. Proper care of your orchids will insure your plant reaches its maximum potential and beauty. Light – An orchid needs an abundance of light. If you are keep your orchid outdoors, make sure it is getting a lot of bright, indirect light or direct sun in temperatures ranging from 75°F – 85°F a day. Orchids are a tropical plant by nature and thrive in that type of environment.

Water – Orchids do not have organs to store water like other flowers and therefore excess water can kill them and cause root rot. The best way to water orchids is to let water run through the soil (best done over a sink) about once a week.

Fertilizer – Only fertilize an orchid when the plant is not in bloom. Feed the plant with a high-nitrogen fertilizer about once a month.

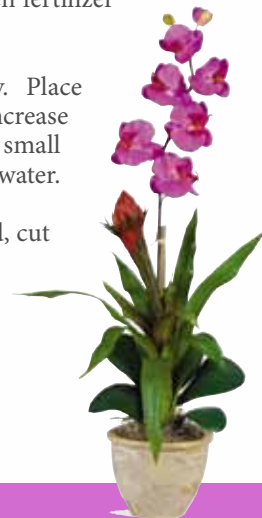
Humidity – Orchids love mild humidity. Place the plant over a tray or dish of water to increase moisture. However, be sure to sit the plant on small rocks to ensure plant is not sitting directly in water.

Pruning – After all the flowers have withered, cut the stem above the second or third node below the last bloom. This will encourage new growth and keep the stem healthy.

Article courtesy of ProPlants.com

AT BROCK FARMS

At both Brock Farms locations, we carry a huge selection of Orchid Bark and Orchid Foods. Let us help you create a beautiful Orchid patch!





So many choices, only one name to remember.

At Laguna we design our products to take the complexity out of pond construction and maintenance so everyone can enjoy the benefits of water gardening. Our extensive and complete product range and unsurpassed quality reflects our commitment to you and your customers.



SIMPLE

Designed to fit today's busy lifestyle, Laguna products are easy to install and maintain.



POWERFUL

Our PowerJet and Max-Flo pumps have unrivalled capacity to generate a high volume of water flow with low energy consumption.



RELIABLE

Laguna products are thoroughly tested to ensure they are the most reliable in the industry.



AVAILABLE AT BROCK FARMS!

For more information call: U.S.A.: 1-800-724-2436 Canada: 1-800-554-2436
Laguna and Hagen are registered trademarks of Rolf C. Hagen, Inc. ©2010

www.lagunaponds.com
For more information call: U.S.A.: 1-800-724-2436 Canada: 1-800-554-2436

Create a Butterfly Haven



Certainly the more fetching of the Lepidoptera (the taxonomic order that also includes moths), butterflies bring an ethereal beauty to any garden. You don't have to leave their visits to chance, you can create a flora-scape to attract these winged gems to be constant garden guests.

Butterflies prefer to flutter by in warmer weather, typically at temps exceeding 60 degrees, and will huddle under leaves or in wood piles in rain and cool evenings. Cloudy days often also keep them roosted, which is why we tend to see them flitting around on sunny days but rarely on cloudy ones. Because their wings are much larger than their thin vertical bodies, butterflies find it troublesome to navigate on windy days and thus prefer vines or shrub borders to relax.

Therefore, in your garden, you may want to place a decorative wood pile or similar shelter, and perhaps a serpentine climbing vine or two plus a mini shrub border that will also serve as visual accents. Do you have an area that frequently

No butterfly garden should be without Butterfly Milkweed.



puddles in rain? May want to leave it, as it is nourishing for the lovely lepidoptera that enjoy the minerals and sodium.

Like their human friends, butterflies are lured to fragrant, lush flowers that are also brightly colored. Such flowers beckon the butterflies because they harbor the nectar the creatures require.

According to the crew at Brock Farms the following greenery are quite attractive to our native butterflies:

Shrubs:

Abelia, Althaea (Rose of Sharon), Azalea, Buddleia (Butterfly Bush), Caryopteris (Blue Mist), Clethra (Summersweet), Ligustrum (Privet Hedge), Potentilla, Prunus (Cherry), Rhododendron, Salix (Willows), spirea, Syringa (Lilac), Viburnum, Weigela, and Yucca.

Perennials:

Achillea (Yarrow), Agastache, Alcea (Hollyhock), Allium (flowering Onion), Asclepias (Butterfly Weed), Aster, Astilbe, Boltonia, Campanula, Centranthus, Chrysanthemum, Coreopsis, Dianthus, Dicentra (Bleeding Heart), Echinacea (Coneflower), Eupatorium, Gaillardia (Blanket Flower), Gaura, Geranium, Hemerocallis (Daylily), Hibiscus, Kniphofia (Poker), Lavendula, Liatris (Blazing Star), Liliun (true Lilies), Lobelia, Monarda (Bee Balm), Nepeta (Catmint), Penstemon, Phlox, Rudbeckia, Salvia (Sage), Scabiosa (Pincushion), Sedum, Solidago (Golden Rod), Thymus (Thyme), Verbena, and Veronica.

Select plants in a variety of colors and heights. Consider planting

azaleas, rhododendrons and lilacs for height. Fragrant 'James McFarland' lilacs seem to be especially attractive to butterflies. Weigela, with its flowers like dainty trumpets, is another good shrub for attracting butterflies.

No butterfly garden should be without Butterfly Milkweed (*Asclepias tuberosa*). Not only will the bright orange blossoms attract many butterflies, but the plant will also provide food for caterpillars. Without the caterpillars there would be no butterflies. Dill and parsley also provide food for butterfly caterpillars. If you're lucky, you may even have Monarch butterflies laying their eggs on the milkweed and you can watch the entire life cycle, from caterpillar to chrysalis to butterfly.

Many other commonly grown flowers will attract butterflies, including hollyhocks, purple coneflowers (*Echinacea*), Black-eyed Susans (*Rudbeckia*), cosmos, huechera, zinnias, beebalm and cleome. Buddleia, also known as butterfly bush, is a must in any butterfly garden. If you have room for this large plant, Mexican sunflower (*tithonia*) will attract many butterflies and hummingbirds with its sunny orange blooms. Plan your butterfly garden so there are blooms all season long. The rhododendrons, azaleas and lilacs will provide a spring snack for butterflies, followed by summer-blooming plants such as the Buddleia and *Asclepias*. In the fall, butterflies will sip nectar from asters and "Autumn Joy" Sedum.

In addition to providing food for butterflies, your butterfly garden should also provide a resting place along with shelter from the wind and cold. Include flat rocks in your garden where the butterflies can sun themselves. It's even better if the rocks have shallow depressions where water will puddle and provide a place for butterflies to gather for a drink.

A small log pile will provide shelter from the weather for butterflies. You can also purchase butterfly shelters that look rather like tall, narrow birdhouses with several slots for entrances. These may attract butterflies, but in my experience wasps tend to move in, discouraging any butterflies from entering.

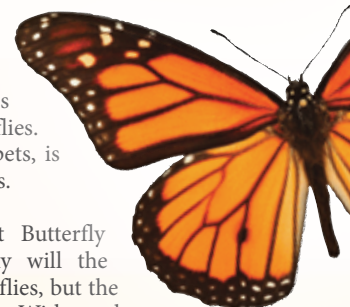
One final thing that every butterfly garden should include is a comfortable bench placed where you can sit and admire the beautiful butterflies. After all, you've created this garden not only for the butterflies but also for your own enjoyment.

Writer Kathy Anderson contributed to this article.

Article Source: <http://EzineArticles.com/266187>

AT BROCK FARMS

At both Brock Farms locations, we have a huge variety of plants that attract butterflies and hummingbirds. Check out our birdbath area for that special finishing touch.



The #1 Requested Brand!

MICROBE-LIFT[®]



MICROBE-LIFT PL
A virtual eco-system in a bottle!
Contains photosynthetic bacteria

Earth-Friendly Products for
**PONDS, FOUNTAINS
& BIRD BATHS**



LEGACY FISH FOOD
Containing live (viable) naturally
occurring microorganisms



Introducing... A NEW PRODUCT LINE

It's About Science • It's About Technology • It's About Time!

*MICROBE LIFE Bacterial and Rare Earth Humate-based products
are designed to improve overall plant health, from top to bottom!*



Ecological Laboratories INC.

Providing Solutions Naturally Since 1976

www.MicrobeLift.com • www.MicrobeLife.com



SPOOKTACULAR



OPENS SEPT. 22ND

**HALLOWEEN FUN AT BROCK FARMS FOR
KIDS AND ADULTS! EACH LOCATION IS A
DIFFERENT EXPERIENCE!**



FALL-O-WEEN FUN!



OPENS SEPT. 22ND

BROCK FARMS HAS HALLOWEEN COSTUMES, FALL DECOR, TREATS, HAYRIDES, CORN MAZE, HAUNTED HOUSE AND PICK YOUR OWN PUMPKIN PATCH!

Christmas at Brock Farms



OVER 40,000 SQ. FT.
OF CHRISTMAS DECORATIONS, TREES,
ORNAMENTS, GIFTS & SO MUCH MORE!
**COME EXPERIENCE OUR
CHRISTMAS WONDERLAND!**





**BROCK FARMS: FREEHOLD
NJ'S LARGEST
CHRISTMAS DISPLAY!**

OPENS NOV. 10TH



BUILDING YOUR FOREVER FENCE

with *Arborvitae*

Emerald green arborvitae (also called *Thuja occidentalis*) are evergreens in the arborvitae family that are the most popular natural fence trees that can border any part of your property for privacy and an estate look. These hardy trees are also natural havens for birds and other friendly wildlife, adding a warm dimension to your landscape. Cardinals love to nest in arborvitae, and often return year after year as they are homesteaders. Sometimes other birds such as robins will “squat” in empty cardinal nests.

Emerald green arborvitae should be pruned early in the spring.

The mature height of emerald green arborvitae is anywhere between 12 and 15 feet and the mature width is often determined by the spacing in between. Remember that these will grow not only up but out and plantings should feature enough room for the mature growth, likely two to three feet wide for healthy trees. If your property features many large trees such as oaks and maples, you'll need to ensure your emerald green Arborvitae “fence” is nowhere near potential shade; these evergreens love full sun, but they do all right in partial sun.

The next logical consideration is how many trees would you need. Envision the mature growth as two feet apart, trunk to trunk. So, a coverage area of 40 feet will mean 20 emerald

green arborvitae. If the trees are smaller (more immature) you may likely want to plant them three feet apart, anticipating solid growth after the first year.



Emerald green arborvitae will grow at a nice steady rate: anywhere between six to 12 inches per year. The key concern is the health of the arborvitae once it is planted. You need to ensure they are planted in well-drained soil and that they are routinely well watered especially during their first year, to help the root systems to firmly establish themselves. During their first year, height and width growth will be nominal as the tree is trying to root itself. Also, Arborvitae will grow more robustly in soil that is alkaline; if your soil isn't, just add a little aluminum sulfate.

Emerald green arborvitae should be pruned early in the spring before its growth spurt occurs. This isn't usually a major or tedious task; emerald green arborvitae are rather tame growers, naturally forming the desired tapering shape. A neat little trim keeps them healthy and growing properly; prune off any rogue branches jutting out and interrupting the sight line.

These trees really do remain a vivid emerald green all year long, but may turn yellow-brown during an especially frigid winter. A normal Monmouth County winter will pretty much retain the vibrant green to enliven the otherwise ubiquitous drab brown- and grey-hued landscape.

Always ensure your arborvitae are well taken care of. A resplendent natural fence of emerald green arborvitae is not only beautiful for you, it gives the same protection and stately look to your neighbors on the other side!

AT BROCK FARMS

Other screening materials are available at both locations! Leyland Cypress, Green Giant Arborvitae, White Pine, Colorado Blue Spruce, Norway Spruce and much more!



Liquid Fence proudly accepts



this product

Gardening Expert Tip:
Your early spring plantings are at risk!
Apply Liquid Fence Deer & Rabbit Repellent all year!

Gardening experts agree...

The only way to stop deer damage is to use Liquid Fence.



“Liquid Fence lives up to its name by keeping the deer at bay in my garden!”

Joe Lamp'1
AKA “Joe Gardener”,
Nationally syndicated
garden writer, host of
Growing a Greener World
& Author of *The Green
Gardener's Guide*

“I have been a fan of Liquid Fence since my first application... I am a believer.”

Dr. Allan Armitage
Award-winning
Horticulturist, Professor
& Author of numerous
garden manuals including
*Armitage's Native Plants
for North American Gardens*

“I couldn't have a garden without Liquid Fence Deer & Rabbit Repellent, it really works!”

Derek Fell
Renowned Horticulturist,
Author & Photographer
of over 60 gardening
books including *Secrets
of Monet's Garden* & the
Encyclopedia of Hardy Plants

There's a reason it's America's number-one selling deer and rabbit repellent...

It works! Today's consumer wants products that are not only effective, but eco-friendly. As with all Liquid Fence® products, Deer & Rabbit Repellent won't harm your plants and is safe around pets and kids. Great for food crops, too!

Long-lasting and four-season effective, it's available in ready-to-use sprays, economical concentrates and now, convenient shake-to-apply granulars.

Backed by a 100% money-back guarantee, it's the only deer and rabbit repellent you'll ever need!



Now available as a shake-to-apply granular for low-growing plants...

And as always, it's all-natural and guaranteed effective!

AVAILABLE AT BROCK FARMS!



(800) 923-3623

Scan this tag with your SmartPhone and go to liquidfence.com...



Go to <http://gettag.mobi> for app download and more information.

BRONZE

B E A U T I E S



For centuries, bronze statues have held those who gazed upon them in thrall -- a combination of the sculptor's talent and the patina that shimmers and glistens, adding a sense of life and movement. No matter the size of your property, if you love the idea of a bronze statue as a centerpiece for lush landscaping, there are many to select from in size, theme and price point.

AT BROCK FARMS

*Available at our Colt's Neck location,
elegant statues of horses, children,
nautical themes and much more!*

NOW YOU SEE THEM.

NOW YOU DON'T!



Illustration of results. When applied as directed.

APPLY TODAY!*



**Apply when weeds are actively growing and daytime temperatures are consistently above 60° F.*



LawnPro®

**WEED AND FEED
WEED CONTROL PLUS LAWN FERTILIZER**

POTWARE as PLANT-WEAR

Look around at all the beautiful houseplants you have. Now ask yourself when the last time some of your older plants have been given a new outfit -- in the form of a glorious new pot?

One of the quickest ways to enhance your indoor and outdoor decor is to take your plants and highlight them with a beautiful pot, from traditional terra cotta to exorbitant and whimsically colored glazed pot ware. At Brock Farms you can hit the pottery lottery with the huge selection of pots for all size plants. We have them available in hundreds of varieties, colors, sizes and very attractive price points.

Houseplants have to be repotted periodically to provide room for their root systems to expand as they grow. It also prevents plants from becoming pot-bound and improves water retention, which in turn increases time between waterings. It makes your plants healthier, more vibrant!

Look around: do some plants seem to have more wilting leaves lately? Are the leaves yellowing near the bottom of the plant, or there visible roots showing even out of the drainage holes? If so -- time to dress up your plant in a new pot! Some gardening experts recommend that the best time for a new pottery outfit is late winter through early spring. Here's why: the longer sunlight hours tend to stimulate growth -- even indoors. The roots will expand as they awaken from winter hibernation.

How to Repot

Here are five simple steps for successful repotting.

- 1 Remove the plant from its old pot and gently finger-shake the root system to loosen a tight rootball.
- 2 Your plant's new pot should be no between two and four inches larger in diameter than its original pot. NOTE: If the new pot is too large in relation to the plant, the soil will dry out slowly and it will be difficult to control the moisture. The top of the soil may be dry to the touch while the soil in the center of the pot may still be wet.
- 3 Place a small piece of broken clay pot over the drainage hole to prevent soil from washing out. Do not add a layer of clay pieces or rocks because this may impede water flow through the pot.
- 4 Select an all-purpose potting mix for the plant. Place enough dry potting mix in the bottom of the pot so that the top of the rootball is within one inch of the container top. Do not add soil above the original level on the rootball.
- 5 Fill around the rootball with the potting mix. Pack the soil gently with your fingers. Water well so excess water drains out of the pot. Repeat as many times as necessary until the soil becomes thoroughly moist.

Your plant will love its new pot-wear because it is now renewed and revived!

AT BROCK FARMS

At both locations we carry a huge selection of terra-cotta, ceramic, Malaysian, Vietnamese, cement, resin, plastic and light-weight garden pottery.

**YOU HIT THE
POTTERY
LOTTERY
WHEN YOU VISIT
BROCK FARMS!**



The Difference is

WATER



Water Features add...

sound, aesthetics, motion, excitement, and dimension to the outdoor living experience.

- ◆ Water features:
 - ◆ increase your enjoyment of any outdoor space with the sight and sounds of running water
 - ◆ are unique and create ways to enhance your current landscaping
 - ◆ create tranquility and relaxation for you, your family and your friends
 - ◆ attract wildlife of all kinds from birds to butterflies, to frogs and salamanders
 - ◆ broaden your gardening horizons

Take advantage of Aquascape's full water feature product line.

VISIT BROCK FARMS TODAY!

for more information on Aquascape, visit www.aquascapeinc.com

THE BUCK STOPS HERE

What a conundrum! Deer are either totally adorable (fawns) or majestic (mature bucks); seeing one or a group always inspires some sort of emotional response.

But Monmouth County homeowners have lost their “aww” factor when it comes to these members of the Cervidae family -- as they love to chow down on expensive plants. In the late autumn and winter, during their rutting season, the animals are a bit more aggressive and the seasonal decline in available food drives them to throw caution to the wind and traipse right up nearly to your front or back door.

There are more deer in the county than ever before; they are pretty healthy breeders and they have very few if any predators (automobiles notwithstanding). They have become bolder and more desperate in their foraging for food.

Typically, deer love to feast on Hosta, fruit trees, fragrant roses, yews, arborvitae and more. They can cause quite a bit of damage to expensive landscape design, and are a source of frustration for many landscape architects and their homeowner clients.

As such, you may have already tried deer netting, seasonal fencing, and burlap, to no avail. Some of the spray repellents will wear off in time.

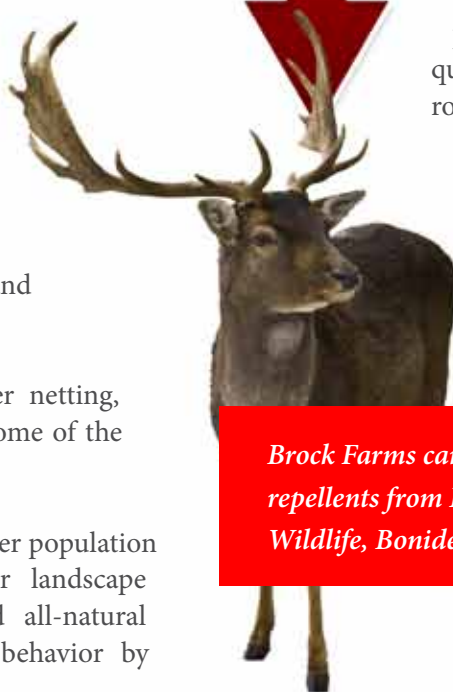
Products that do work are humane to the deer population while making them suddenly view your landscape as undesirable. Formulators have created all-natural repellents that operate on deer’s innate behavior by

manipulating their sense of smell or taste. Deer are naturally afraid of anything that smells like death and decay, and upon sensing this, will avoid the area completely.

Employing prevention is easier than trying to stop the deer’s natural foraging cycle after it has begun. Deer, like many mammals, are creatures of habit and have decent memory. If one has found your arborvitae to be quite the tasty morsel last spring, and another is addicted to your rosebushes in summer, you’ll be seeing them enjoying those same meals same time next year. Be wary, tour your yard and look for signs your yard is an impromptu diner for deer; apply any of a number of repellent products at the first signs and you will see much less damage.

Another good piece of advice is to work with neighbors and get them on board to use the same product. You may have your own property lines, but deer roam freely, crossing those lines. If a few are munching away in your yard, guaranteed they move down the buffet line next door and down the street.

Note that you or your landscape designer can plant any of a rather large number of “deer resistant” plants, those flora that deer find quite unappetizing. However, in rough winters when deer become desperate to survive, they may be driven by the absolute need for fortification and nourishment and chow down on these anyway.



AT BROCK FARMS

Brock Farms carries top-of-the-line deer and rabbit repellents from Liquid Fence, Deer Scram, Messina Wildlife, Bonide, Bobbex and more!

A *Green Solution* to Deer Damage

DEER SCRAM

GRANULAR REPELLENT

TM

**NO MIXING or SPRAYING
JUST SHAKE or SPRINKLE!**

- 100% biodegradable
- No mixing or spraying
- Won't hurt animals!
- Effective in all seasons
- Available in 3 sizes




FOR
organic
gardening

EASY TO USE
Trains Deer to Stay Away
& Protects your Plants
up to 45 days!



**STOPS DEER DAMAGE AND
GUARANTEED
to work!**

AVAILABLE AT BROCK FARMS!

EPIC

epicrepellents.com • deerscram.com © 2012 EPIC Deer Scram is a trademark of Enviro Protection Industries, Inc.

BENEATH THE SURFACE OF HYDROPONICS

Gardeners will tell you that working one-on-one with their flora-scapes is a sensuous experience. The soil's pungent odor with a sweet, wafting top note, and its rich feel, enhance the visual attraction of the vast variety of leaves, stems, flowers, bark and roots. Working in one's garden is altogether akin to rapture.

If you like greenery but feel you have a brown thumb, or live in a condo or townhouse and thus lack your own yard space, consider the bounty and joy of hydroponics. You can see an example of hydroponics in the basil plants sold in many supermarkets: put it in water, pluck the leaves fresh for cooking.

Hydroponic plants have their food and water delivered directly to their roots.



Hydroponic plants obtain their required minerals (nutrients) that come from the water supply and thus do not need soil; almost any plant may be cultivated hydroponically. In nature, the soil acts as the plate or bowl for the root system to feed from; the soil itself is not an essential element for plants to survive.

There are several advantages to growing hydroponic plants inside your home: no need for soil, the water remains in the system and can be recycled, it is easier to harvest, and of course, if growing herbs and vegetables such as tomatoes, you can enjoy the delicious bounty all year long!

Another advantage is the ability to control the environment for your plants, which won't be subject to the whim of Mother Nature or need to be restricted by seasonal fluctuations.

Take your time to research what you want to grow indoors. Perhaps some plants and flowers to green up and add lively color to rooms, and some veggies and herbs you like to use in cooking. You will need certain equipment such as specialized lighting, nutrient systems and fertilizers, and fans/blowers. Also on the must-have list is an inert soil-free medium like fiber, sand or stone to anchor the roots. These are porous to provide excellent retention of air and water both of which are necessary for the plant to thrive.

Your space will need good, proper ventilation, a power supply and if possible, white, matte-painted walls to enhance reflectivity. Some flowering plants will require 12 hours of total, undisturbed darkness every day.

Hydroponic plants have their food and water delivered directly to their roots which benefits the plant because the energy it normally uses to develop long roots in a typical outdoors or soil-based pot can be redirected to growing more of the plant itself, including its vegetables or flowers.

The typical growth rate of a hydroponic plant is between 30 and 50 percent faster than if it were grown in soil under the same conditions. The hydroponic plant's yield is also usually greater. According to agricultural researchers, it is the extra oxygen in the hydroponic growing mediums that stimulate root growth as oxygen in the root system helps the roots absorb nutrients more expediently; the plant doesn't have to spend extra effort finding soil-encased nutrients because the nutrients are delivered directly to the plant several times a day, consistently. As such, the hydroponic plant requires much less energy to find and consume its meals, and that extra energy is used to grow faster and produce more.

Growing your hydroponic plants indoors also lessens dramatically the risk of insect infestations and growth of fungi, giving them a greater health advantage.

For those concerned about ecological impact, hydroponic gardening conserves water usage, and you may need only small amounts of pesticides, depending upon the plant and any vagaries of your space.

For more in-depth information about growing your own hydroponic plants, visit hydroponics.net.



AT BROCK FARMS

Stop by Brock Farms' Colts Neck location for a huge selection of hydroponic products from Hydra Farm, Bio Bizz, Humboldt, Danner, Ecological Labs, Fox Farms and more!

Protect Your Yards & Gardens

with



AVAILABLE AT BROCK FARMS!

For more information about our products visit us at www.DalenProducts.com

10 TIPS TO FLOURISH YOUR ORGANIC GARDEN



Environmental sustainability has become a priority -- and a multi-billion-dollar industry. "Organics" comprise a significant part of this quest to preserve the environment and protect natural resources.

Organic gardens are those that only use animal or vegetable fertilizers rather than synthetics, and also use only natural pest control instead of industrial insecticides.

However, says the Organic Gardening Guru (organicgardeningguru.com) "organic growing is much more than what we use and don't use. It is a philosophy that stresses increasing the natural health of the soil, choosing appropriate plants that are suited to your area, and working with nature to produce a healthy and productive garden."

Below are 10 tips from the Organic Gardening Guru to keep your organic garden thriving all year long.

- 1 Companion planting is an excellent way to improve your garden. Some plants replenish nutrients lost by another one, and some combinations effectively keep pests away.
- 2 Water in the morning to help avoid powdery mildew and other fungal diseases that are often spread by high humidity.
- 3 The longer the growing season, the more compost is needed in the soil. A longer growing season requires more nutrients and organic matter in the soil.
- 4 Attract ladybugs to your garden with nectar-producing plants such as parsley, dill, and fennel.



5 New beds require plenty of compost, soil amendments and double digging for that extra kick.

6 Pinching off flowers frequently encourage most annuals to flower more abundantly.

7 When watering, try to water deeply and thoroughly. Frequent, shallow watering train your plants to keep their roots near the surface, making them less hardy and more likely to suffer when deprived of water.

8 Rotate your crops each year to help reduce pest and disease problems, as well as correct nutrient deficiencies and excesses.

9 Diatomaceous earth makes an excellent organic insecticide - it is an abrasive white powder used to damage the cuticle, skin and joints of insects. It also makes an excellent slug barrier.

10 For an organic approach to pest control, build up your soil to encourage healthy microbes and other soil microorganisms, and earthworms. Healthy soil means healthy plants that are better able to resist pests and disease, thus reducing the need for harmful pesticides.

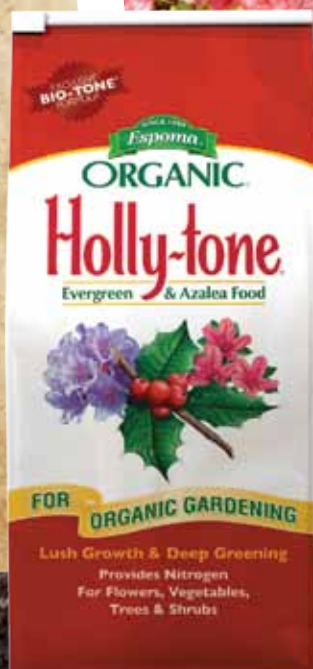
For many more articles about the nuances of organic gardening and landscaping, save organicgardeningguru.com as a favorite!

AT BROCK FARMS

Brock Farms has a complete line of organic gardening products like compost tea, bat houses, fertilizers and soils.

SINCE 1929
Espoma
ORGANIC

**It took Jordan just one spring
to get loads of blooms.
{ Plus 82 years of organic expertise. }**



Plants have been thriving on our organic plant foods ever since we originated them for gardeners in 1929. Holly-tone® was the first plant food specifically designed for evergreens such as azaleas, camellias, rhododendron and for over 60 years has remained the leading choice for professional and amateur gardeners. It contains the finest natural ingredients and is safe for people, pets and the environment.

Espoma. A natural in the garden since 1929.

AVAILABLE AT BROCK FARMS!

Join our gardening community at
facebook.com/espomaorganic



Get to the **ROOT** of the problem.



To grow a healthy lawn, you need to work below the surface.

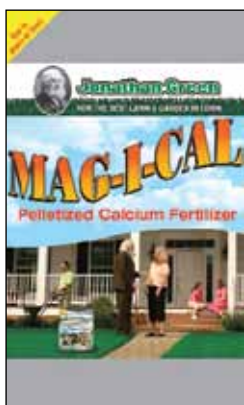
A successful lawn starts with the soil - healthy soil grows healthy grass. MAG-I-CAL Calcium Fertilizer revitalizes the soil by rapidly raising the pH, which improves a grass plant's ability to utilize soil nutrients. MAG-I-CAL also contains humates which stimulate beneficial soil organisms, increasing microbial activity. When the soil is in balance, fertilizers work better, grass plants flourish and weeds and disease are much less of a problem.

Organic Lawn Fertilizer helps to rejuvenate your tired, sick lawn with a slow, gentle feeding, promoting healthy, thick, dark-green grass over time. Made with 100% organic ingredients, Organic Lawn Fertilizer is safe to use where children and pets play.

Since your lawn will never be better than the grass seed varieties you use to establish it. It's important to plant the best grass seed mixtures you can buy.

Black Beauty Ultra Grass Seed Mixture has been proven on sod farms across the USA. This grass is naturally dark-green in color, and possesses an invisible waxy coating to preserve moisture and ward off disease and contain endophytes for natural insect resistance. Black Beauty Ultra also grows grass roots up to four feet deep, making the lawn very tolerant of drought and stress. Overseeding your lawn with Black Beauty Ultra Grass Seed Mixture will thicken and improve the appearance of your entire lawn.

MAG-I-CAL, Organic Lawn Fertilizer and Black Beauty – the perfect combination for a beautiful and carefree lawn.



Balances the soil.



Used by sod growers.



Kid and pet friendly.

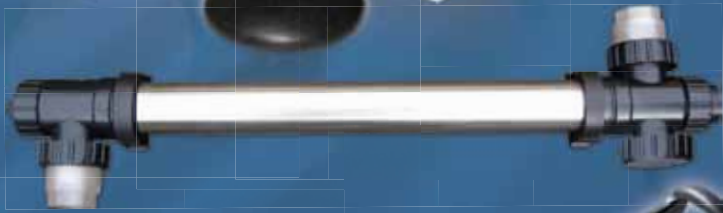


Jonathan Green

FOR THE BEST LAWN IN TOWN

www.jonathangreen.com

enhance
**YOUR
POND &
GARDEN**
with...



WATERFOUNTAINS



SOLARSTAKES



GARDENACCENTS



BIRDBATHS



HOW TO HAVE BEAUTIFUL HYDRANGEAS



Hydrangeas are full-sun to partial-shade plants that appreciate moist, well-drained soil; however, lots of organic matter will certainly help. Although the nicest hydrangeas I have seen were on Nantucket and Martha's Vineyard in virtually pure sand, I suspect it's simply the moisture that's the key -- so water them copiously! Here, you'll learn quick tips about pruning and other factors that affect color, growth and health.

Feeding tip: Don't feed new plants until they are established (one to two months) and then use a balanced fertilizer. Feed sparingly, as too much nitrogen prevents flowering.

Pests and Disease

While the list of diseases (wilt, blight, leafspot, rust) and pests (rose chafer, scale, mites and nematodes) seems daunting, I have never actually seen any of these, and don't expect to. I have seen powdery mildew, but this is easily controlled with benomyl, oil or lime sulfur (the latter two will discolor blossoms). Generally the biggest problems with this plant are siting and culture, so find a sheltered, partly shaded spot, water regularly, and soon your summer and fall will be filled with hydrangeas.

Summer Borders

Hydrangeas can be the backbone of most summer borders. Their cultural requirements lend themselves to combining with roses (in a full-sun situation; both need plenty of water), weigelia, spirea, and many other summer flowering shrubs. Let's not forget the perennial border; there are any number of possible combinations there. All in all, hydrangeas are a versatile plant that deserves a place in your garden.

Cultivating Color

The other big question with feeding hydrangeas is flower color. Acid soils give us blues and baser soils cause pink flowers. The key is aluminum ions in the soil, so aluminum sulfate is a good quick fix, but prolonged use year after year may cause a fatal buildup in the soil. Iron sulfate is a safer fix, or try alternating. If pink is what you want, top dress with dolomite or drench with a quick lime solution.

Failure to Flower

Hydrangeas fail to flower for several reasons. Most common would be frost damage, followed very closely by late pruning. Too much shade or nitrogen are other likely culprits, but let's look at siting our plant and pruning as our best controls. If your hydrangea is not flowering look at your growing practices and where you situate the plant, then make appropriate changes.



AT BROCK FARMS

You will not know which Hydrangea to choose from! Both locations boast an amazing selection of many varieties.

Spring Spectacular

SAVE UP TO \$40!

Take advantage of our *Special Spring Rebate Offer* on selected

PONDMASTER®

pond pumps. Don't miss out on this great opportunity to have an energy-efficient Pondmaster pump in your water garden.

REBATES OFFERED:

02519	Magnetic Drive Utility Pump 1.9	\$10	20210	HY-Drive Pump 1900 GPH	\$20
02522	Magnetic Drive Utility Pump 2	\$15	20215	HY-Drive Pump 2550 GPH	\$25
02523	Magnetic Drive Utility Pump 3	\$15	20220	HY-Drive Pump 4850 GPH	\$35
02525	Magnetic Drive Utility Pump 5	\$15	20225	HY-Drive Pump 6100 GPH	\$40
02527	Magnetic Drive Utility Pump 7	\$15	20230	HY-Drive Pump 6600 GPH	\$40
02720	Magnetic Drive Utility Pump 9.5	\$15			
02722	Magnetic Drive Utility Pump 12	\$20			
02728	Magnetic Drive Utility Pump 18	\$25			
02750	Magnetic Drive Utility Pump 24	\$30			



This offer is valid from April 1st through June 30th 2012. Just cut out the UPC code on the package and include it along with a copy of your original store receipt and a completed rebate coupon. See rebate coupon for more details.

Pondmaster Products are Available at Brock Farms



FREEHOLD



Linda Brock-Arcoleo
Owner/Vice President



Jean Brock
Owner/Secretary



Barbara Crawford
Office Manager



Debbie Schweizer
Retail Manager



Alex Onop
Nursery Manager



**Kathy Pearson
Rob Freeman
Karen Pearson
Beamarie Hale**
Office Staff



John Ryan
Assistant Nursery Manager



Lynne Rossi
Sales



Michael Brock
Aquatic Sales



**Paul Whitter
Dean Moore
Anthony D'Egidio**
Wholesale Team

COLTS NECK



Ed Brock, Jr.
Owner/President



Ed Brock, Sr.
Owner/CEO



Paula Martinez
General Manager



Kristin Herring
Manager



Kathy Murray
Manager



Quinn Lahm
Turf Expert



Gregorio "Goyo" Diaz
Nursery Specialist



Barry Krueger
Sales



Kerrie Ziegler
Office



Jackie Moldonado
Aquatic Specialist

WE AT BROCK FARMS WISH TO EXTEND OUR APPRECIATION FOR THE DEDICATED SERVICE OF OUR MORE THAN 100 EMPLOYEES. YOU ARE ALL A BIG PART OF OUR FAMILY!

Brock Farms
4189 US Highway 9
Freehold, NJ • 07728

NEW JERSEY'S #1 GARDENING DESTINATION FOR OVER 70 YEARS!



STATUARY • WATER GARDENING • TREES • PAVERS • SHRUBS • FLOWERS • BIRDING • SEASONAL DECOR

Freehold
4189 Route 9 North
Freehold, NJ 07728
Phone: 732-462-2700

BROCK
FARMS

GARDEN WORLD

Colts Neck
375 Route 34
Colts Neck, NJ 07722
Phone: 732-462-0900

WWW.BROCKFARMS.COM

 **FIND US ON FACEBOOK**